

INTERNATIONAL STUDENT

COURSE MINI GUIDE 2021



**ENGLISH
LANGUAGE**

**BUSINESS &
MANAGEMENT**
Business & Leadership

HOSPITALITY
Commercial Cookery &
Hospitality Management

**HEALTH &
COMMUNITY
SERVICES**

**EARLY
CHILDHOOD
EDUCATION**

**PROFESSIONAL
YEAR PROGRAM**
Accounting &
Australian Computer Society

**HIGHER
EDUCATION**
Undergraduate &
Postgraduate

**SHORT
COURSES**

A PERSONAL MESSAGE FROM OUR PRESIDENT

In light of the dramatic upheavals of recent times, pursuit of an international education must be a greater adventure than ever. For those prepared to face the kind of uncertainty and confusion the world has experienced, there are great opportunities. And the best form of preparation, as we all know, is education.

Of course, adventure carries risk. Australia is known to be a safe destination for international students, but its extraordinary success in managing the COVID pandemic has shown just how stable this country is. No Australian state has done as well as Western Australia in allowing so much "business as usual" and maintaining the Perth lifestyle students and residents love. Only few education providers were able to support international students in these critical times with as little disruption to their study plan as has Stanley College.

As the world embarks on the exciting journey of post-pandemic recovery, Stanley College is here to help you DISCOVER your own path, LEARN how to travel it successfully, and to ENJOY the journey.

We offer courses that provide clear pathways to employment and further study. We allow for as much articulation into higher qualifications as possible, with credit arrangements for time and cost savings. We provide scholarship opportunities and financing facilities if needed. We emphasise the importance of practical experience, with Work Based Training in our Vocational courses, and Work Integrated Learning in our Higher Education offerings.

It is certainly an exciting time to be a student. It would be my privilege, and that of the whole Stanley College community, to support you on this great adventure.

Alberto Tassone

President, Stanley College



HALL OF FAME MEMBER
Education & Training Award
2016, 2017, 2018

WHY PERTH



One of the **MOST LIVEABLE CITIES** in the world.



265 **SUNNY DAYS** every year with the longest coastal shore lines and beautiful beaches.



REGULAR FLIGHTS

Come to Perth from any part of the world via any major cities.



EMPLOYMENT OPPORTUNITIES

One of the fastest growing cities in Australia with a booming industry that creates more employment opportunities, especially in Hospitality and Health.



FREE PUBLIC TRANSPORT within the city



DIVERSITY with Culinary delights from all over the world!

Stanley College is a member of the following associations:

WHY STANLEY COLLEGE

ONLINE COURSES

Full and partial Online Courses available.

PACKAGED COURSES

Options to package from English, Certificate, Diploma, Undergraduate, and Postgraduate studies.

REPUTATION

Highly recognised and award winning registered training organisation.

LOCATION

Conveniently located campuses near public transport.

WORK-BASED TRAINING

Work-based training and internships for most study pathways.

SOCIAL ACTIVITIES

Weekly social, sporting and cultural activities.

FLEXIBLE CLASSES

Weekday and weekend class options available for most courses.

PATHWAY PROGRAMS

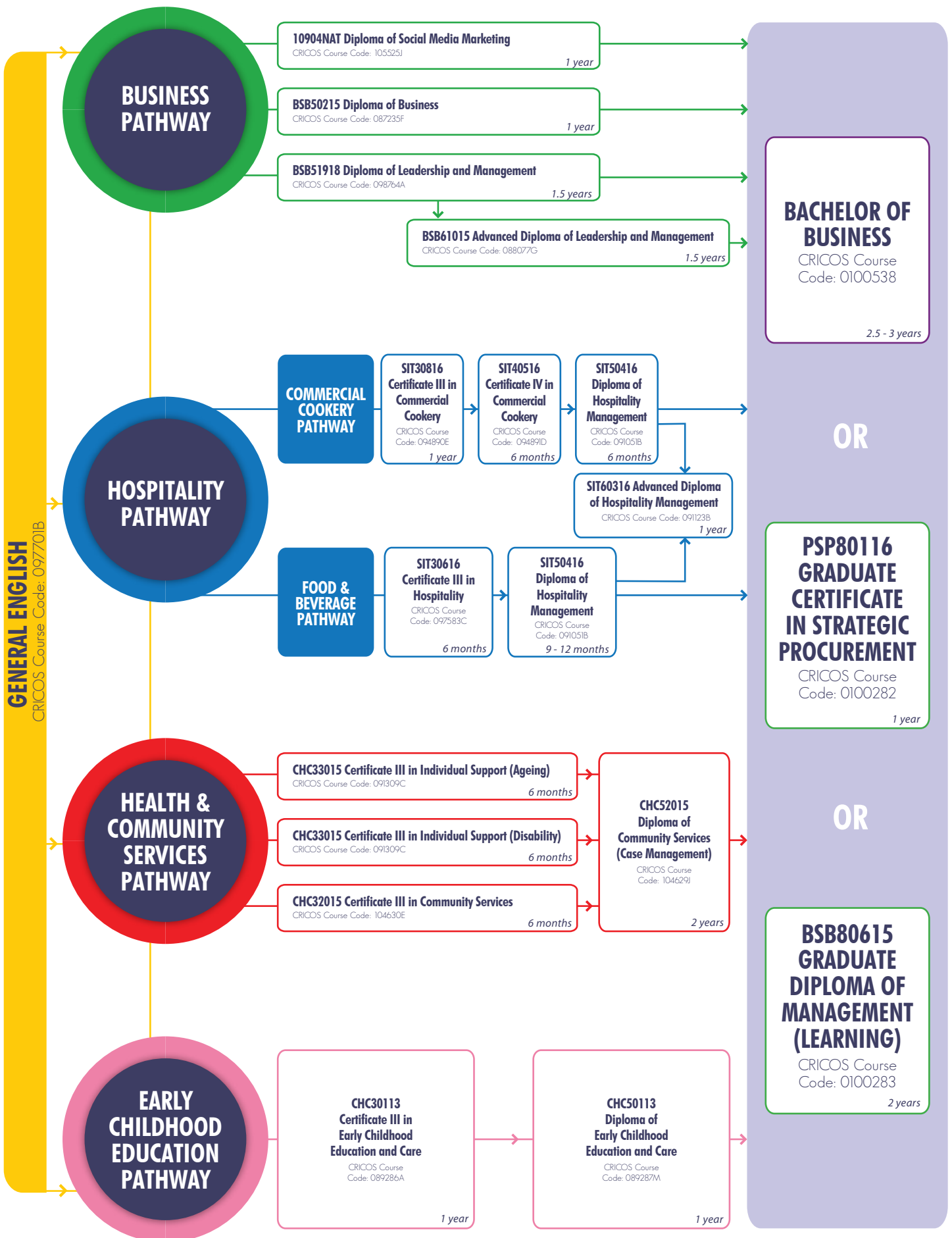
University pathways for Diploma and Advanced Diploma courses.

PAYMENT PLANS

Quarterly and monthly payment options available.



STUDY PATHWAYS AT STANLEY COLLEGE



Exit at any stage with a qualification

STUDENT TESTIMONIALS



I love everything about Stanley College, from the trainers, to facilities to student support. The best part about my course is the Work Based Training. As part of my Certificate III, I was given the opportunity to work at PCEC (Perth Convention and Exhibition Centre) where I worked alongside other chefs who taught me good work ethics and habits whilst working in an industrial kitchen. My trainer in particular would give us tips and shortcuts making sure that we are equipped with proper methods and techniques.

Yosephine, Indonesia
Commercial Cookery



I chose to come to Perth because some of my friends were already here. I like studying at Stanley College because the teachers and classmates are really nice to me. The classrooms and facilities are very new and modern here. After my English course, I will continue my studies into the Diploma of Business. Once I complete my studies, I would like to work with a travel company. Stanley College is a good school and I would recommend to my friends.

Chi Kwai, Hong Kong
General English



I decided to study at Stanley College because it was highly recommended by my friend. I love their campus in West Perth as it is modern and big. The best things about my course are the practical classes and the trainers. They are very friendly and always happy to assist me with everything. Once I finish my course I will be confident and qualified to go back to Italy and continue my career in Early Childhood Education.

Sara, Italy
Early Childhood Education and Care



I first came here on a Working Holiday Visa but decided to enrol in a Hospitality course as an International student because I was interested in pursuing a career in Hospitality and Management. I came across Stanley College in Perth city, which was very conveniently located for me to commute to study and work. Studying at Stanley College has given me the knowledge, skills and work experience within the industry. I now work part-time with a very nice Asian fusion restaurant in Perth and I am glad to have embarked on this journey.

Soraya, Thailand
Diploma of Hospitality Management





INTAKE DATES (2021)

Every Monday

COURSE DURATION

- 4 - 75 weeks
- 20 scheduled course contact hours per week + FREE optional GIL (Guided Individual Learning) sessions.

Full-time studies requires students to attend 20 hours face-to-face scheduled course contact per week

STUDY MODES

- Face-to-face classroom-based learning
- Group-work
- Oral Presentations
- Discussion groups
- Vocabulary building exercises
- Excursions

COURSE CONTENT

Speaking and listening

- Grammar
- Vocabulary
- Pronunciation
- Communication and conversation strategies
- Read and writing

LEVELS

- Beginner - Upper-Intermediate

TIMETABLE

- 8:00am - 12:00noon (Mon - Fri)

COST

- Tuition Fee: \$250 per week

** Stanley College has paused our face-to-face classes in General English for 2021*



SIT30816 CERTIFICATE III IN COMMERCIAL COOKERY

CRICOS Course Code 094890E



SIT40516 CERTIFICATE IV IN COMMERCIAL COOKERY

CRICOS Course Code 094891D



INTAKE DATES (2021)

4 Jan / 15 Mar / 24 May / 2 Aug / 4 Oct

COURSE DURATION

- 52 weeks (Including 12 weeks of holidays)
 - 2½ days per week
- Full Time studies requires students to attend a minimum of 20 scheduled course contact hours per week*

WORK BASED TRAINING

- 200 hours in 10 weeks

STUDY MODES

- Face-to-face classroom-based learning
- Practical training and assessment is completed in commercial kitchens, including Perth Convention and Exhibition Centre (PCEC) and Stanley College's The Culinary Workshop.
- Work-Based Training

CAREER OPPORTUNITY

- Cook

COURSE ENTRY REQUIREMENTS

Academic

- Completion of Australian Year 10 or equivalent

English Proficiency

- Intermediate Level of English / IELTS 5.0 / Other recognised English Language tests

COST

- Tuition Fee: \$10,900
- Materials Fee: \$1,100

INTAKE DATES (2021)

4 Jan / 15 Mar / 24 May / 2 Aug / 4 Oct

COURSE DURATION

- 26 weeks (Including 6 weeks of holidays)
 - 2½ days per week
- Full Time studies requires students to attend a minimum of 20 scheduled course contact hours per week*

STUDY MODES

- Face-to-face classroom-based learning
- Practical training and assessment at The Culinary Workshop

CAREER OPPORTUNITY

- Chef
- Chef de partie

COURSE ENTRY REQUIREMENTS

Academic

- Completion of Australian Year 11 or equivalent

English Proficiency

- Intermediate Level of English / IELTS 5.0 / Other recognised English Language tests

COURSE PREREQUISITE REQUIREMENT

- Completion of SIT30816 Certificate III in Commercial Cookery

COST

- Tuition Fee: \$5,200
- Materials Fee: \$300



COMMERCIAL COOKERY PATHWAY

SIT50416 DIPLOMA OF HOSPITALITY MANAGEMENT (COMMERCIAL COOKERY PATHWAY)

CRICOS Course Code 091051B



SIT60316 ADVANCED DIPLOMA OF HOSPITALITY MANAGEMENT (COMMERCIAL COOKERY PATHWAY)

CRICOS Course Code 091123B



INTAKE DATES (2021)

4 Jan / 15 Mar / 24 May / 2 Aug / 4 Oct

COURSE DURATION

- 26 weeks (Including 6 weeks of holidays)
- 2½ days per week

Full Time studies requires students to attend a minimum of 20 scheduled course contact hours per week

STUDY MODES

- Face-to-face classroom-based learning
- Practical training and assessment at The Culinary Workshop

CAREER OPPORTUNITY

- Chef de Cuisine
- Kitchen Manager
- Sous Chef

COURSE ENTRY REQUIREMENTS

Academic

- Completion of Australian Year 12 or equivalent

English Proficiency

- Upper-intermediate Level of English / IELTS 5.5 / Other recognised English Language tests

COURSE PREREQUISITE REQUIREMENT

- Completion of SIT40516 Certificate IV in Commercial Cookery

COST

- Tuition Fee: \$5,200
- Materials Fee: \$150

INTAKE DATES (2021)

4 Jan / 15 Mar / 24 May / 2 Aug / 4 Oct

COURSE DURATION

- 52 weeks (Including 12 weeks of holidays)
- 2½ days per week

Full Time studies requires students to attend a minimum of 20 scheduled course contact hours per week

STUDY MODES

- Face-to-face classroom-based learning
- Business Hub simulated workplace activities

CAREER OPPORTUNITY

- Executive Chef
- Head Chef
- Executive Sous Chef

COURSE ENTRY REQUIREMENTS

Academic

- Completion of Australian Year 12 or equivalent

English Proficiency

- Upper-intermediate Level of English / IELTS 5.5 / Other recognised English Language tests

COURSE PREREQUISITE REQUIREMENT

- SIT50416 Diploma of Hospitality Management (Commercial Cookery Pathway)

COST

- Tuition Fee: \$9,600
- Materials Fee: \$300

A member of:



PRACTICAL VENUES FOR COMMERCIAL COOKERY and HOSPITALITY COURSES



THE CULINARY WORKSHOP

As the official training venue for Stanley College hospitality courses, The Culinary Workshop is open to the general public and has two commercial kitchens and a restaurant on campus. This provides students with a distinct advantage as they can develop and improve their cookery, management, customer service and other skills in a real work environment.

PRACTICAL TRAINING AT THE PERTH CONVENTION AND EXHIBITION CENTRE (PCEC)

The Perth Convention and Exhibition Centre (PCEC) is Western Australia's only purpose-built conference, exhibition, and meeting space. The convention centre has six multi-function exhibition pavilions, a theatre with 2,500 capacity and a ballroom with stunning views over the Swan River.

Stanley College and our students are given exclusive access to undertake their practical training in the convention centre's commercial kitchen.



SIT30616 CERTIFICATE III IN HOSPITALITY

CRICOS Course Code : 097583C



SIT50416 DIPLOMA OF HOSPITALITY MANAGEMENT (FOOD & BEVERAGE PATHWAY)

CRICOS Course Code 091051B



INTAKE DATES (2021)

4 Jan / 15 Mar / 24 May / 2 Aug / 4 Oct

COURSE DURATION

- 26 weeks (Including 7 weeks of holidays)
- 2½ days per week
- Full Time studies requires students to attend a minimum of 20 scheduled course contact hours per week*

WORK-BASED TRAINING

- 140 hours in 7 weeks

STUDY MODES

- Face-to-face classroom-based learning
- Practical training and assessment at the Culinary Workshop
- Work-Based Training

CAREER OPPORTUNITY

- Espresso Coffee Machine Operator
- Food and Beverage Attendant
- Function Attendant
- Function Host
- Restaurant Host
- Senior Bar Attendant
- Waiter

COURSE ENTRY REQUIREMENTS

Academic

- Completion of Australian Year 10 or equivalent

English Proficiency

- Intermediate Level of English / IELTS 5.0 / Other recognised English Language tests

COST

- Tuition Fee: \$5,200
- Materials Fee: \$300

OPTION 1: 36 Weeks (Advanced Standing)

INTAKE DATES (2021)

4 Jan / 15 Mar / 24 May / 2 Aug / 4 Oct

COURSE DURATION

- 36 weeks (including 6 weeks of holidays)
- 2½ days per week
- Full Time studies requires students to attend a minimum of 20 scheduled course contact hours per week*

STUDY MODES

- Face-to-face classroom-based learning
- Practical training and assessment at the Culinary Workshop
- Work-Based Training

CAREER OPPORTUNITY

- Banquet or Function Manager
- Restaurant Manager
- Bar and Cafe Manager
- Club Manager
- Motel Manager
- Unit Manager (Catering Operations)

COURSE ENTRY REQUIREMENTS

Academic

- Completion of Australian Year 12 or equivalent

English Proficiency

- Upper-intermediate Level of English / IELTS 5.5 / Other recognised English Language tests

COURSE PREREQUISITE REQUIREMENT

- Completion of the SIT30616 Certificate III in Hospitality

COST

- Tuition Fee: \$6,600
- Materials Fee: \$150



FOOD AND BEVERAGE PATHWAY

SIT50416 DIPLOMA OF HOSPITALITY MANAGEMENT (FOOD & BEVERAGE PATHWAY)

CRICOS Course Code 091051B



SIT60316 ADVANCED DIPLOMA OF HOSPITALITY MANAGEMENT (FOOD AND BEVERAGE)

CRICOS Course Code 091123B



Option 2: 52 Weeks (Direct Entry)

INTAKE DATES (2021)

4 Jan / 15 Mar / 24 May / 2 Aug / 4 Oct

COURSE DURATION

- 52 Weeks (including 12 weeks of holidays)
- 2½ days per week.

Full Time studies requires students to attend a minimum of 20 scheduled course contact hours per week

WORK-BASED TRAINING

- 108 hours in 5 weeks

CAREER OPPORTUNITY

- Banquet or Function Manager
- Restaurant Manager
- Bar and Cafe Manager
- Club Manager
- Motel Manager
- Unit Manager (Catering Operations)

COURSE ENTRY REQUIREMENTS

Academic

- Completion of Australian Year 12 or equivalent

English Proficiency

- Upper-intermediate Level of English / IELTS 5.5 / Other recognised English Language tests

COURSE PREREQUISITE REQUIREMENT

- No prerequisite entry requirements exist for this course.

COST

- Tuition Fee: \$8,600
- Materials Fee: \$600

INTAKE DATES (2021)

4 Jan / 15 Mar / 24 May / 2 Aug / 4 Oct

COURSE DURATION

- 52 Weeks (including 12 weeks of holidays)
- 2½ days per week.

Full Time studies requires students to attend a minimum of 20 scheduled course contact hours per week

STUDY MODES

- Face-to-face classroom-based learning
- Business Hub simulated workplace activities

CAREER OPPORTUNITY

- Area Manager or Operations Manager
- Cafe Owner or Manager
- Club Secretary or Manager
- Motel Owner or Manager
- Food and Beverage Manager

COURSE ENTRY REQUIREMENTS

Academic

- Completion of Australian Year 12 or equivalent

English Proficiency

- Upper-intermediate Level of English / IELTS 5.5 / Other recognised English Language tests

COURSE PREREQUISITE REQUIREMENT

- Completion of SIT50416 Diploma of Hospitality Management (Food and Beverage Pathway)

COST

- Tuition Fee: \$9,600
- Materials Fee: \$300

INDUSTRY PARTNERS



More Industry Partners



CHC33015 CERTIFICATE III IN INDIVIDUAL SUPPORT (AGEING)

CRICOS Course Code 091309C



CHC33015 CERTIFICATE III IN INDIVIDUAL SUPPORT (DISABILITY)

CRICOS Course Code 091309C



INTAKE DATES (2021)

18 Jan / 15 Feb / 15 Mar / 12 Apr / 10 May / 7 Jun /
5 Jul / 2 Aug / 30 Aug / 27 Sep / 25 Oct / 22 Nov

COURSE DURATION

- 26 weeks (Including 6 weeks of holidays) **Standard Pathway**
- 16 weeks **Intensive Pathway***
- 3 days per week
- Weekday & weekend classes available

*Full Time studies requires students to attend a minimum of
20 scheduled course contact hours per week*

WORK-BASED TRAINING

- 160 hours in 8 weeks
- National Police Clearance (WA)[^]
- Medical Clearance may also be required[^]
- Evidence of Flu Vaccination[^]

[^]Required to complete the work-based training component of the course

STUDY MODES

- Face-to-face classroom-based learning.
- Practical simulated activities in Stanley College ward
- Work-based training

CAREER OPPORTUNITY

- Accommodation Support Worker
- Personal Care Giver
- Respite Care Worker
- Nursing Assistant

COURSE ENTRY REQUIREMENTS

Academic

- Completion of Australian Year 10 or equivalent

English Proficiency

- Intermediate Level of English / IELTS 5.0 / Other recognised English Language tests

COST

Standard Pathway

- Tuition Fee: \$4,300
- Materials Fee: \$300

Optional add-on:

Disability (DIS): \$840

Intensive Pathway*

- Tuition Fee: \$1,950
- Materials Fee: N/A

Optional add-on:

Disability (DIS): \$420

INTAKE DATES (2021)

18 Jan / 15 Feb / 15 Mar / 12 Apr / 10 May / 7 Jun /
5 Jul / 2 Aug / 30 Aug / 27 Sep / 25 Oct / 22 Nov

COURSE DURATION

- 26 weeks (Including 6 weeks of holidays) **Standard Pathway**
- 16 weeks **Intensive Pathway***
- 3 days per week
- Weekday classes available

*Full Time studies requires students to attend a minimum of
20 scheduled course contact hours per week*

WORK-BASED TRAINING

- 160 hours in 8 weeks
- National Police Clearance (WA)[^]
- Medical Clearance may also be required[^]
- Evidence of Flu Vaccination[^]

[^]Required to complete the work-based training component of the course

STUDY MODES

- Face-to-face classroom-based learning.
- Practical simulated activities in Stanley College ward
- Work-based training

CAREER OPPORTUNITY

- Disability Support Worker
- Personal Care Giver
- Respite Care Worker
- Community Worker

COURSE ENTRY REQUIREMENTS

Academic

- Completion of Australian Year 10 or equivalent

English Proficiency

- Intermediate Level of English / IELTS 5.0 / Other recognised English Language tests

COST

Standard Pathway

- Tuition Fee: \$4,300
- Materials Fee: \$300

Optional add-on:

Ageing (AGE): \$840

Intensive Pathway*

- Tuition Fee: \$1,950
- Materials Fee: N/A

Optional add-on:

Ageing (AGE): \$420

HEALTH AND COMMUNITY SERVICES

CHC32015 CERTIFICATE III IN COMMUNITY SERVICES

CRICOS Course Code 104630E



CHC52015 DIPLOMA IN COMMUNITY SERVICES (CASE MANAGEMENT)

CRICOS Course Code 104629J



INTAKE DATES (2021)

8 Feb / 15 Feb / 15 Mar / 12 Apr / 10 May / 7 Jun /
5 Jul / 2 Aug / 30 Aug / 27 Sep / 25 Oct / 22 Nov

COURSE DURATION

- 26 weeks (Including 6 weeks of holidays) **Standard Pathway**
- 15 weeks **Intensive Pathway**
- 3 days per week
- Weekday & weekend classes available

*Full Time studies requires students to attend a minimum of
20 scheduled course contact hours per week*

WORK-BASED TRAINING

- 160 hours in 8 weeks
 - National Police Clearance (WA)[^]
 - Medical Clearance may also be required[^]
 - Evidence of Flu Vaccination[^]
 - Current Working with Children Check (WWCC)[^]
- [^]Required to complete the work-based training component of the course*

STUDY MODES

- Face-to-face classroom-based learning.
- Practical simulated activities in Stanley College ward
- Work-based training

CAREER OPPORTUNITY

- Migrant Support Worker
- Neighbourhood Centre Worker
- Support Workers (Community Services)
- Assistant Community Worker

COURSE ENTRY REQUIREMENTS

Academic

- Completion of Australian Year 10 or equivalent

English Proficiency

- Intermediate Level of English / IELTS 5.0 / Other recognised English Language tests

COST

Standard Pathway

- Tuition Fee: \$4,300
- Materials Fee: \$300

Intensive Pathway*

- Tuition Fee: \$1,950
- Materials Fee: N/A

* Course duration does not include holidays, and requires WBT placement to be completed full time (minimum 38 hours per week)

INTAKE DATES (2021)

1 Feb / 15 Mar / 10 May / 7 Jun / 5 Jul
16 Aug / 27 Sep / 8 Nov

COURSE DURATION

- 104 weeks (Including 24 weeks of holidays)
 - 3 days per week
 - Weekday classes available
- Full Time studies requires students to attend a minimum of
20 scheduled course contact hours per week*

WORK-BASED TRAINING

- 400 hours in 20 weeks
 - National Police Clearance (WA)[^]
 - Medical Clearance may also be required[^]
 - Evidence of Flu Vaccination[^]
 - Current Working with Children Check (WWCC)[^]
- [^]Required to complete the work-based training component of the course*

STUDY MODES

- Face-to-face classroom-based learning.
- Practical simulated activities in Stanley College ward
- Work-based training

CAREER OPPORTUNITY

- Child Welfare Officer
- Community Services Worker
- Social Housing Coordinator
- Community services Case Manager

COURSE ENTRY REQUIREMENTS

Academic

- Completion of Australian Year 12 or equivalent

English Proficiency

- Upper-Intermediate Level of English / IELTS 5.5 / Other recognised English Language tests

COST

- Tuition Fee: \$18,000
- Materials Fee: \$900

INDUSTRY PARTNERS



More Industry
Partners



CHC30113 CERTIFICATE III IN EARLY CHILDHOOD EDUCATION AND CARE

CRICOS Course Code 089286A



INTAKE DATES (2021)

4 Jan / 18 Jan / 15 Feb / 15 Mar / 12 Apr / 10 May / 7 Jun /
5 Jul / 2 Aug / 30 Aug / 27 Sep / 25 Oct / 22 Nov

COURSE DURATION

- 52 weeks (Including 12 weeks of holidays)
- 3 days per week

*Full Time studies requires students to attend a minimum of
20 scheduled course contact hours per week*

WORK-BASED TRAINING

- 240 hours in 12 weeks
- Current Working with Children Check[^]
[^]Required to complete the work-based training component of the course
- National Police Clearance*
**To be employed in the Early Childhood Education industry, a National Police Clearance is not required. However some WBT employers may require that you obtain one prior to commencing your WBT placement.*

STUDY MODES

- Face-to-face classroom-based learning
- Work-based training
- Simulated work experience (in the Stanley College Crèche)

CAREER OPPORTUNITY

- Early Childhood Educator - Assistant level
- Family Day Care Carer
- Kindergarten Assistant
- Nanny
- Preschool Assistant

COURSE ENTRY REQUIREMENTS

Academic

- Completion of Australian Year 10 or equivalent

English Proficiency

- Intermediate Level of English / IELTS 5.0 / Other recognised English Language tests

COST

- Tuition Fee: \$8,200
- Materials Fee: \$450

CHC50113 DIPLOMA OF EARLY CHILDHOOD EDUCATION AND CARE

CRICOS Course Code 089287M



INTAKE DATES (2021)

18 Jan / 15 Feb / 15 Mar / 12 Apr / 10 May / 7 Jun /
12 Jul / 9 Aug / 6 Sep / 4 Oct / 1 Nov / 29 Nov

COURSE DURATION

- 52 weeks (Including 12 weeks of holidays)
 - 3 days per week
 - Weekday & weekend classes available
- Full Time studies requires students to attend a minimum of
20 scheduled course contact hours per week*

WORK-BASED TRAINING

- 300 hours in 15 weeks
- Current Working with Children Check[^]
[^]Required to complete the work-based training component of the course
- National Police Clearance*
**To be employed in the Early Childhood Education industry, a National Police Clearance is not required. However some WBT employers may require that you obtain one prior to commencing your WBT placement.*

STUDY MODES

- Face-to-face classroom-based learning
- Structured learning activities
- Work-based training

CAREER OPPORTUNITY

- Early Childhood Educator
- Day Care Centre Supervisor / Manager
- Preschool Supervisor / Manager
- Kindergarten Supervisor / Manager

COURSE ENTRY REQUIREMENTS

Academic

- Completion of Australian Year 12 or equivalent

English Proficiency

- Upper-intermediate Level of English / IELTS 5.5 / Other recognised English Language tests

Course Prerequisite Requirement

- Completion of CHC30113 Certificate III in Early Childhood Education and Care

COST

- Tuition Fee: \$9,600
- Materials Fee: \$450

INDUSTRY PARTNERS



More Industry
Partners



EARLY CHILDHOOD EDUCATION

BSB50215 DIPLOMA OF BUSINESS

CRICOS Course Code 087235F



10904NAT DIPLOMA OF SOCIAL MEDIA MARKETING

CRICOS Course Code 105525J



INTAKE DATES (2021)

4 Jan / 8 Feb / 15 Mar / 26 Apr / 24 May / 14 Jun / 2 Aug / 6 Sep / 4 Oct / 8 Nov

COURSE DURATION

- 52 weeks (Including 12 weeks of holidays)
- 2½ days per week

Full Time studies requires students to attend a minimum of 20 scheduled course contact hours per week

STUDY MODES

- Face-to-face classroom-based learning
- Online study
- Business hub - simulated workplace

CAREER OPPORTUNITY

- Executive Officer
- Program Consultant
- Program Coordinator

COURSE ENTRY REQUIREMENTS

Academic

- Completion of Australian Year 12 or equivalent

English Proficiency

- Upper-Intermediate Level of English / IELTS 5.5 / Other recognised English Language tests

COST

- Tuition Fee: \$8,600
- Materials Fee: \$300

INTAKE DATES (2021)

12 Apr / 24 May / 2 Aug / 4 Oct

COURSE DURATION

- 52 weeks (Including 12 weeks of holidays)
- 2½ days per week

Full Time studies requires students to attend a minimum of 20 scheduled course contact hours per week

STUDY MODES

- Face-to-face classroom-based learning
- Online study
- Business hub - simulated workplace

CAREER OPPORTUNITY

- Digital / Social Media Strategy Manager
- Content Marketing Strategist
- Digital / Social Media Coordinator

COURSE ENTRY REQUIREMENTS

Academic

- Completion of Australian Year 12 or equivalent

English Proficiency

- Upper-Intermediate Level of English / IELTS 5.5 / Other recognised English Language tests

COST

- Tuition Fee: \$7,600
- Materials Fee: \$450



STUDY ONLINE NOW
for offshore students



A member of:

**Chamber of Commerce
and Industry WA**

BUSINESS AND LEADERSHIP

BSB51918 DIPLOMA OF LEADERSHIP AND MANAGEMENT

CRICOS Course Code 098764A



INTAKE DATES (2021)

4 Jan / 15 Mar / 24 May / 2 Aug / 4 Oct

COURSE DURATION

- 78 weeks (Including 18 weeks of holidays)
- 2½ days per week
- Weekday & weekend classes available

Full Time studies requires students to attend a minimum of 20 scheduled course contact hours per week

STUDY MODES

- Face-to-face classroom-based learning
- Business hub - simulated workplace

CAREER OPPORTUNITY

- Business Manager
- Human Resources Manager
- Sales Team Manager

COURSE ENTRY REQUIREMENTS

Academic

- Completion of Australian Year 12 or equivalent

English Proficiency

- Upper-Intermediate Level of English / IELTS 5.5 / Other recognised English Language tests

COST

- Tuition Fee: \$12,900
- Materials Fee: \$450

BSB61015 ADVANCED DIPLOMA OF LEADERSHIP AND MANAGEMENT

CRICOS Course Code 088077G



INTAKE DATES (2021)

4 Jan / 15 Mar / 24 May / 2 Aug / 4 Oct

COURSE DURATION

- 78 weeks (Including 18 weeks of holidays)
- 2½ days per week
- Weekday & weekend classes available

Full Time studies requires students to attend a minimum of 20 scheduled course contact hours per week

STUDY MODES

- Face-to-face classroom-based learning
- Business hub - simulated workplace

CAREER OPPORTUNITY

- Area Manager
- Department Manager
- Regional Manager

COURSE ENTRY REQUIREMENTS

Academic

- Completion of Australian Year 12 or equivalent

English Proficiency

- Upper-Intermediate Level of English / IELTS 5.5 / Other recognised English Language tests

COST

- Tuition Fee: \$12,900
- Materials Fee: \$450



PSP80116 GRADUATE CERTIFICATE IN STRATEGIC PROCUREMENT

CRICOS Course Code: 0100282



INTAKE DATES (2021)

4 Jan / 12 Apr / 19 Jul / 11 Oct

COURSE DURATION

- 52 weeks (Including 12 weeks of holidays)
- 2½ days per week

Full Time studies requires students to attend a minimum of 20 scheduled course contact hours per week

STUDY MODES

- Face-to-face classroom-based learning
- Business hub - simulated workplace
- Currently online due to COVID-19

CAREER OPPORTUNITY

- Strategic Procurement Manager
- Supply and Distribution Manager
- Procurement Manager
- Logistics Manager
- Supply Chain Manager
- Head of Logistics/Transport
- Strategic Purchasing Manager

COURSE ENTRY REQUIREMENTS

Academic

- Completion of a recognised degree or diploma or advanced diploma or equivalent

English Proficiency

- Upper-Intermediate Level of English / IELTS 6.0 / Other recognised English Language tests

COURSE PREREQUISITE REQUIREMENT

- Diploma/Advanced Diploma qualification in any field of study (onshore or offshore) or equivalent; or
- Bachelor Degree in any field of study (onshore or offshore) or equivalent; or
- Evidence of relevant work experience.

COST

- Tuition Fee: \$9,800
- Materials Fee: \$450

BSB80615 GRADUATE DIPLOMA OF MANAGEMENT (LEARNING)

CRICOS Course Code: 0100283



INTAKE DATES (2021)

4 Jan / 12 Apr / 19 Jul / 11 Oct

COURSE DURATION

- 104 weeks (Including 24 weeks of holidays)
- 2½ days per week

Full Time studies requires students to attend a minimum of 20 scheduled course contact hours per week

STUDY MODES

- Face-to-face classroom-based learning
- Business hub - simulated workplace
- Currently online due to COVID-19

CAREER OPPORTUNITY

- Director, workforce planning and development
- General manager human resources
- General manager/ head of school or registered training organisation (RTO)
- Learning and development senior consultant
- Manager, learning and change management
- Manager, learning and development

COURSE ENTRY REQUIREMENTS

Academic

- Completion of a recognised degree or diploma or advanced diploma or equivalent

English Proficiency

- Upper-Intermediate Level of English / IELTS 6.0 / Other recognised English Language tests

COURSE PREREQUISITE REQUIREMENT

- Diploma/Advanced Diploma qualification in any field of study (onshore or offshore) or equivalent; or
- Bachelor Degree in any field of study (onshore or offshore) or equivalent; or
- Evidence of relevant work experience (no less than 3 years in a senior management or leadership position).

COST

- Tuition Fee: \$19,600
- Materials Fee: \$900



BACHELOR OF BUSINESS

CRICOS Code: 0100538



INTAKE DATES

8 Mar 2021 / 23 Aug (2021)

7 Mar 2021 / 22 Aug (2022)

COURSE DURATION

- 3 years full time (2.5 years when packaged)
- Students must complete a total of 240 credit points (24 units with 10 credit points per unit)

Units will be delivered over 2 semesters per year, with 4 units each semester for a full time load.

STUDY MODES

- Face-to-face classroom-based learning
- Work Integrated Learning (WIL)
- Units will be delivered over 2 semesters per year, with 4 units in each semester for a full-time load

STUDY MODES

- Face-to-face
- Work Integrated Learning (WIL)
- Units will be delivered over 2 semesters per year, with 4 units in each semester for a full-time load

COST

- \$8,250 per Semester
- \$16,500 per year (Total = \$49,500)



The Business Degree focuses on providing a practical approach to education which aims to enhance the employability of students. To that end a key component is a Work Integrated Learning (WIL) placement where students get an opportunity to work within a business or other type of organisation so that they can make use of the knowledge they have acquired in class, to real world circumstances.



Dr. Malcolm Abbott

Dean, Higher Education



HIGHER EDUCATION

ACCOUNTING PROFESSIONAL YEAR PROGRAM (APYP)



INTAKE DATES (2021)

25 Jan / 22 Mar / 19 Apr / 17 May / 14 Jun / 12 Jul / 9 Aug /
6 Sep / 4 Oct / 1 Nov

CAMPUS

- Available in Perth and Adelaide

COURSE DURATION

- 44 weeks
- 8 hours per week

INTERNSHIP

- 12 week Accounting internship

STUDY MODES

- Face-to-face classroom-based learning

COURSE ENTRY REQUIREMENTS

- Undertake a face-to-face pre-enrolment interview with the authorised Provider to ensure course suitability and viability
- Completed one or more Accounting related degrees as a result of at least two years full time study in Australia
 - The degree/s must be on the approved list of courses for international students (CRICOS)
 - Have completed the most recent degree within the past two years
- Have a current Academic or General IELTS score of 6.0 in each band, or the equivalent score from Pearsons, TOEFL iBT or Cambridge Advanced English (from the 1st of September 2020, evidence of English Language Test results must be provided at enrolment)
- Hold a 485 visa (or other appropriate visa) with a validity of at least 12 months
- Have a positive skills assessment from one of the Professional Accounting Bodies

COST

- Tuition Fee: \$7,200 (Perth)
- Tuition Fee: \$5,800 (Adelaide)

AUSTRALIAN COMPUTER SOCIETY PROFESSIONAL YEAR PROGRAM (ACS PYP)

INTAKE DATES (2021)

17 May / 14 Jun / 12 Jul / 9 Aug / 6 Sep / 4 Oct / 1 Nov

CAMPUS

- Available in Perth

COURSE DURATION

- 44-52 weeks
- 8 hours per week

INTERNSHIP

- 12 week ICT internship

STUDY MODES

- Face-to-face classroom-based learning

COURSE ENTRY REQUIREMENTS

- Undertake an individual, documented pre-enrolment interview with Stanley College to ensure program suitability, shared internship expectations, and completion viability.
- Have successfully attained an ICT-related Bachelor or Master degree or higher from an Australian tertiary institution as a result of a minimum of two years' full-time study in Australia prior to commencing ACS PYP per the Australian Study Requirement (ASR)
- Hold a valid passport and visa that allows full work and study rights whilst undertaking the ACS PYP. Prospective applicants who already hold a valid visa are required to hold a minimum of 12 months' validity (365 days) on their visa from the date of ACS PYP commencement
- Hold a current English Language Test result undertaken within the three years immediately prior to the date of ACS PYP commencement and demonstrate an IELTS score of 6.0 in each band (Academic or General), with no band below a 6.0, or the equivalent score from Pearson, TOEFL iBT, Cambridge Advanced English or Occupational English Test

COST

- Tuition Fee: \$11,000

Stanley College is an approved Accounting PYP provider and endorsed by the following:



Stanley College is an approved Australian Computer Society Professional Year Program provider.



A member of:



INDUSTRY PARTNERS



PROFESSIONAL YEAR PROGRAMS



More Industry
Partners

SHORT COURSES



HLTAID003

PROVIDE FIRST AID*

CRICOS Course Code: 097582D

This course provides you with the techniques and skills to confidently administer emergency care and life support to the ill or injured, until medical aid arrives. Students also learn a range of practical skills, including casualty assessment, decision-making and basic life support, including Cardio-Pulmonary Resuscitation (CPR). Successful students receive a Statement of Attainment at the end of the course.

*This unit of competency forms part of SIT20316 Certificate II in Hospitality.

COST: \$120 per person

DURATION: 3 days



SITHFAB002

Provide Responsible Service of Alcohol (RSA)*

CRICOS Course Code: 097582D



Responsible service of alcohol is an important part of the health and safety requirements in all WA hotels and licensed restaurants. Indeed, this Nationally-Recognised Unit of Competency is a legal requirement for anyone who is required to serve alcoholic beverages in WA. This unit provides you with the skills and knowledge to responsibly sell and serve alcohol, as required under the Liquor Control Act 1988 in WA. To recognise this competency, a Statement of Attainment is issued on successful completion of the unit.

*This unit of competency forms part of SIT20316 Certificate II in Hospitality.

COST: \$120 per person

DURATION: 2 days

(Including theory and practical components.)



WORKSHOPS



BARISTA WORKSHOP

Our barista workshop gives participants all of the practical experience they need to be professional coffee makers. It is suitable for both beginners and active baristas - who need the fundamental skills for preparing all styles of great tasting coffee! A Certificate of Participation is issued at the end of the workshop.

COST: \$120 per person

DURATION: 1 day

This workshop is not a CRICOS registered course.



COCKTAIL Workshop



Making cocktails is fun - and this workshop gives you all of the practical experience you need to be a professional cocktail maker. The workshop is also suitable for beginners who may require fundamental skills in preparing all styles of great tasting cocktails! All successful students receive a Certificate of Participation at the end of the workshop.

COST: \$150 per person

DURATION: 2 days

This workshop is not a CRICOS registered course.



OUR CAMPUSES



PERTH CITY CAMPUS

171 James Street,
Northbridge



WEST PERTH CAMPUS

69 Outram Street,
West Perth



MIRRABOOKA CAMPUS

9 Chesterfield Road,
Mirrabooka



FACILITIES	Perth City Campus (PCC)	West Perth Campus (WPC)	Mirrabooka Campus (MBC)
Classrooms	8 Classrooms	18 Classrooms	10 Classrooms
Student Lounge	✓	✓	✓
Computer Lab/WiFi	✓	✓	✓
Prayer Room	✓	✓	✓
Alfresco Area	✓	✓	-
Restaurant/Cafe	✓	✓	-
Commercial Kitchens	✓	-	-
Library	-	✓	-
Business Hub	-	✓	-
Health Ward	-	-	✓
Creche	-	-	✓

Note:

- Stanley College provides free WiFi access for on-campus use.
- Materials Fee include equipment and resources used during course delivery at Stanley College.



DISCOVER

LEARN

ENJOY



HEAD OFFICE

WEST PERTH CAMPUS (WPC)
69 Outram Street, West Perth WA 6005

PERTH CITY CAMPUS (PCC)
171 James Street, Perth, WA 6003

MIRRABOOKA CAMPUS (MBC)
9 Chesterfield Road Mirrabooka WA 6061

PHONE: +61 8 6371 9999
EMAIL: info@stanleycollege.edu.au
WEBSITE: www.stanleycollege.edu.au

ADELAIDE CAMPUS
Level 1, East 50, Grenfell Street, Zurich House, Adelaide SA 5000
PHONE: +61 8 8120 4140
EMAIL: info@stanleycollege.edu.au

REPRESENTATIVE OFFICE


PHILIPPINES
ADDRESS: Unit 309-310 Executive Building Center,
369 Sen Gil Puyat Ave., Brgy. Bel-Air Makati City, Philippines 1209
MOBILE: +63 998 580 3355
EMAIL: marketing@stanleycollege.edu.au



Stanley International College Pty Ltd Trading as Stanley College
CRICOS PROVIDER CODE: 03047E
RTO Code: 51973
TEQSA Provider No: PRV14050
ABN: 16 130 977 221

Version: 1.5 April 2021

 Find us on Facebook
facebook.com/St StanleyInternationalCollege

 Follow us on Instagram
instagram.com/stanley_college

 Follow us on WeChat
WeChat ID: 斯坦利学院 Stanley College

 Follow us on YouTube
youtube.com/c/St StanleyCollegeRTO51973

 Call us on Skype
Perth, Western Australia, Skype: stanley.college

Philippines Skype: stanley.college.philippines
Latin America Skype: stanley.college.brasil

Every effort has been made to ensure that the information contained in this publication is correct as of 15 April 2021.

This information is subject to amendment without notice. Stanley College reserves the right to add, vary or discontinue, without notice, any unit or course and impose limitations on enrolment on any course, prior to enrolment. Please visit www.stanleycollege.edu.au for the latest updates.